



TRUCKEE MEADOWS PARKS FOUNDATION

AWARENESS • APPRECIATION • STEWARDSHIP

ANNUAL REPORT

2019

6

THE STATE OF
OUR PARKS

7

2019 BY THE
NUMBERS

8

PROGRAMS
& EVENTS

16

MEMBERS

DEAR FRIENDS OF THE PARKS FOUNDATION,

We are delighted to share the results of our work in 2019. It was a dynamic year for the Parks Foundation—a year of project development, board growth, and planning for the future in a rapidly changing city. As the Truckee Meadows grows in size, density, and diversity, the role of parks in community health, recreation and culture will become even more crucial to our neighborhoods’ identity and livability.

In 2019, the Parks Foundation’s board developed a new strategic plan that concentrates on what we can do in a region with changing needs to promote the sustainability of our parks, open spaces, and trails. With an updated mission, we will work to address the immediate needs of the community while also undertaking robust, long-term projects. We will work to raise funds for exciting new projects, connect people to parks through programming, support volunteers and advocates, and place a high priority on equity and accessibility for our programs. We look forward to all that 2020 will bring and sharing it with each of you.

Sincerely,

Heidi Anderson,
Executive Director

Sarah Chvilicek,
Board President

MISSION

Truckee Meadows Parks Foundation protects and enhances our communities’ livability through public engagement, education, and the sustainability of our parks, open spaces, and trails.

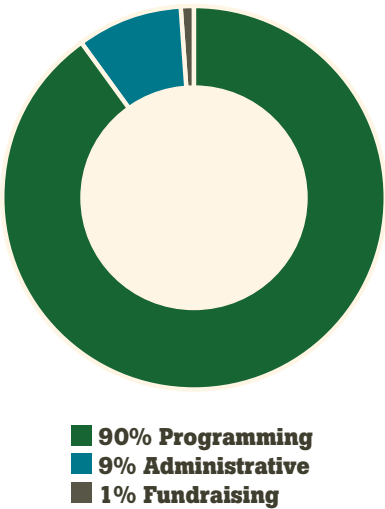


GOALS

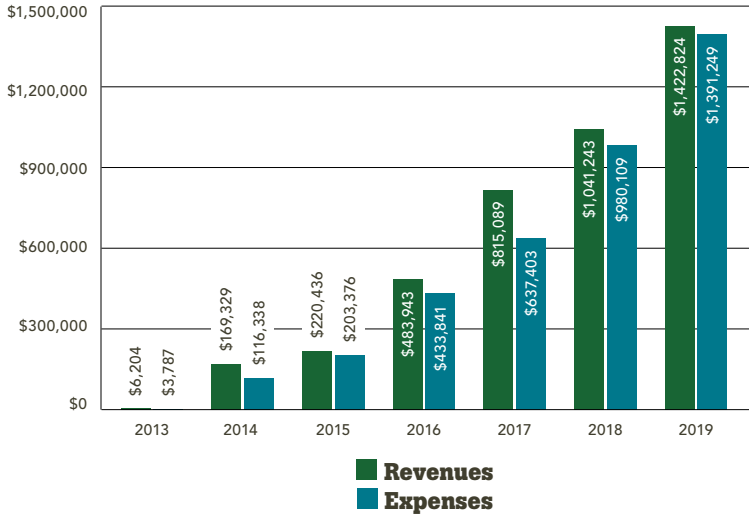


FINANCIALS AT A GLANCE

2019 Expenditures



The Parks Foundation’s Revenue & Expenses





BOARD OF DIRECTORS



Sarah Chvilicek,
President



Dawn Smith,
Vice President



David von Seggern,
Treasurer



David Jickling,
Board Director



Emily Lande-Rose,
Board Director



Tina Nappe,
Board Director



Sophia Kirschenman,
Board Director



Katie Palani,
Board Director

PARKS FOUNDATION STAFF



Heidi Anderson,
Executive Director



Haley Kirby,
Operations Director



Miranda Sanford,
Development Director



Elena Larsen,
Wetland Restoration Program Director



Devin Genovese,
Student Stewards Program Director



Hannah Lansverk Sonnenberg,
Student Stewards Program Manager



AMERICORPS MEMBERS



Adrienne Juby,
Nature Study Area Development Coor.



Anna Oetting,
Naturalist Educator



Bradlyn Wissert,
Naturalist Educator



Chantel Dominguez,
Community Engagement Coor.



Christian Villagomez,
VISTA Leader



Daniel Correa,
Lead Wetland Restoration Technician



Dominique Dixon,
Communication Coordinator



Emma Steer,
Wetland Restoration Technician



Eliza Jones,
Wetland Restoration Technician



Jacob Cronin,
Wetland Restoration Technician



Jaime Gonzalez Canon,
Naturalist Educator



Jennifer Rust,
Wellness Education Coordinator



Kara Hettinger,
Wetland Restoration Technician



Karly Bristol,
Membership Coordinator



Kayla Sherman,
Naturalist Educator



Kevin Schroeder,
Lead Wetland Restoration Technician



Marie Perez Navarro,
Naturalist Educator



Matthew Herring,
Wetland Restoration Outreach Coord.



Max Whealon,
Programs and Events Coordinator



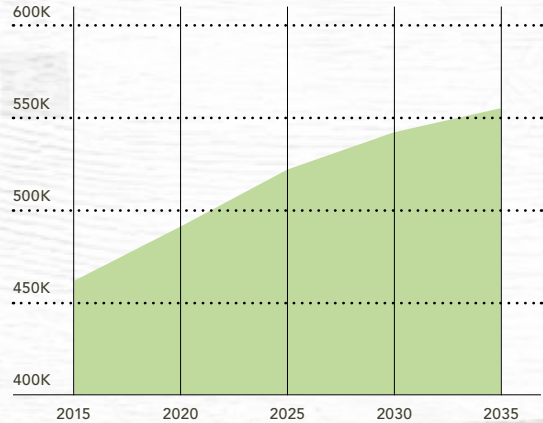
Tyler Morris,
Resource Development Coordinator

THE STATE OF OUR PARKS

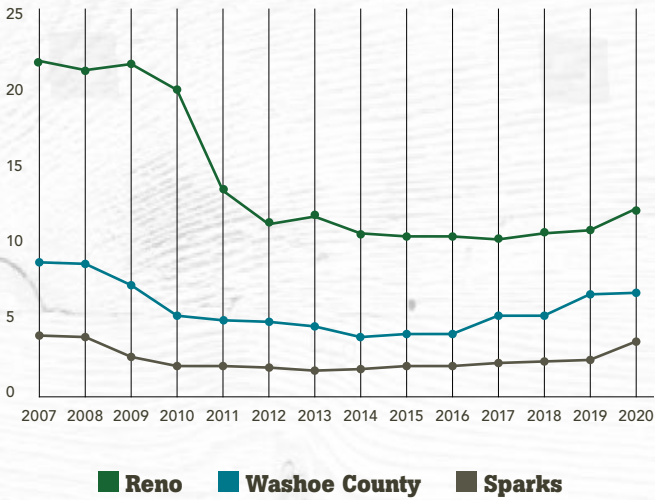
Parks departments in the Truckee Meadows continue to operate on a fraction of their pre-recession budgets. This has led to severe service reductions and infrastructure deterioration at our local facilities.



Projected Population Growth



City & County Parks and Recreation Funding



SINCE 2007,

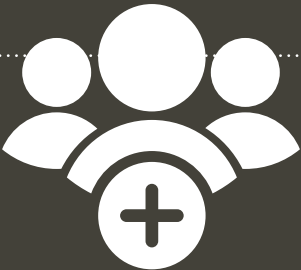
Washoe County has experienced a \$48 million parks and recreation budget gap. This has led to a backlog of maintenance and park capital improvement projects. If this trend continues for another 20 years, this gap could grow by another \$94 million, creating a \$142 million gap over a 30-year period (Washoe County Parks Master Plan).

2019 BY THE NUMBERS



321

ACTIVE MEMBERS



\$44,405

IN MEMBERSHIPS

87

AMERICORPS MEMBERS
PLACED IN NORTHERN
NEVADA

3,315

PARTICIPANTS
WHO ATTENDED
PROGRAMS/EVENTS



GUIDED WALKS
AND HIKEs

1,740

TOTAL MILES WALKED
BY PARTICIPANTS

\$79,257

RAISED FOR FISCAL
SPONSORSHIP



3,887

STUDENTS ENGAGED
IN PARK DATA
COLLECTION



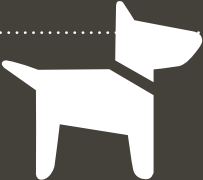
2,257

VOLUNTEER HOURS



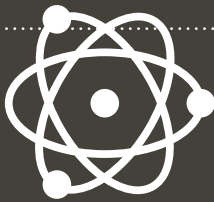
\$1,343,567

SECURED TO SUPPORT
PARK-BASED PROGRAMS
& EVENTS



272,400

DOG WASTE BAGS
DISTRIBUTED (APPROX)



282

SCIENCE CAMP
SCHOLARSHIPS

PROGRAMS & EVENTS



2,829 STUDENTS IN 2019
11,841 STUDENTS SINCE 2015

Student Stewards Program

The Student Stewards Program turns local parks into learning laboratories where students are able to connect with nature and practice hands-on science outdoors. The STEM (science, technology, engineering, math) and Next Generation Science Standards-based curriculum is designed to inspire young students to care for our parks, trails and open spaces throughout their lives. AmeriCorps Naturalist Educators are hard at work in schools everyday teaching economically underserved Washoe County students how to collect science data on birds, insects, water and soils.



474 CAMP SPOTS FILLED
53% OF CAMPERS RECEIVED
SCHOLARSHIPS

Student Stewards Spring and Summer Break Camps

For two weeks in the spring and nine weeks in the summer, students discover the natural world around them during the Parks Foundation's spring and summer break camps. These STEAM (science, technology, engineering, arts, and math)-based camps in Idlewild Park support educators, parents and students by providing highly impactful experiences that expand on classroom content. These camps encourage students to develop curiosities, uncover passions and begin a lifelong love of and appreciation for the natural world. Need-based scholarships are available for children who could not otherwise attend camp.



327 ATTENDEES IN 2019
357 TRAILS CHALLENGE
REGISTRANTS

Truckee Meadows Trails Challenge

Community members of all ages can harness the power of the outdoors to benefit their physical and mental health through the self-guided, goal-oriented Truckee Meadows Trails Challenge. As part of the Trails Challenge, the Parks Foundation hosts monthly guided-hikes that engage participants in the exploration of local natural and cultural history while getting out and getting healthy. In addition, longer, quarterly "Adventure Series" hikes are available for those looking for an extra challenge. By attending guided-hikes, participants can check off a few trails while learning about our region and meeting other Trails Challenge hikers.



735 ATTENDEES IN 2019
26 PARKS EXPLORED

Discover Your Parks Walks

From April through September, community members explore the natural and cultural history of our region through the weekly Discover Your Parks Walks. Participants build healthy habits, while connecting with new outdoor spaces every Thursday evening. Walks are free, approximately one-mile and one-hour long.

Junior Naturalist Passport Program

Children of all ages and backgrounds investigate their public lands and participate in hands-on science each month during the Junior Naturalist Passport Program. Each free, two-hour, park-based session provides nature and science lessons along with arts and crafts activities based on the session's theme. Through the Junior Naturalist Passport, children explore a different park each month focusing on varying habitats found around Northern Nevada.



909 ATTENDEES IN 2019
11 PARKS EXPLORED

Dementia-Friendly Nature Walks

Every week, individuals living with dementia and their carepartners are able to connect with the natural world through the Dementia-Friendly Nature Walks. These free, interpretive walks take participants through an exploration of seasonal change along the Truckee River. Walks are held every Tuesday in partnership with the Alzheimer's Association, Dementia Friendly Washoe County, and the Sanford Center for Healthy Aging.



48 WALKS IN 2019

2019 EVENT HIGHLIGHTS

Healthy Parks Healthy People 5K Fun Run & Walk

Over 200 community members joined the Parks Foundation to celebrate our regional parks and open spaces, while improving their health and wellness. The event includes a free kids obstacle course to get the next generation of park-lovers active!



Amplify Life Hike

In 2019, the Parks Foundation partnered with local non-profit, Amplify Life, to host an interpretive hike at Mayberry Park for children and adults with disabilities in our community.



Member Appreciation Events

Without support from generous members, Truckee Meadows Parks Foundation would not exist. To show our gratitude, the Parks Foundation hosts member appreciation events throughout the year, including exclusive hikes and camping trips held in various parks and trails in the region.



STEWARDSHIP THROUGH VOLUNTEERISM

Truckee Meadows Parks Foundation is fortunate enough to have outstanding volunteers that engage in rewarding stewardship opportunities in our local parks. Ongoing positions and volunteer events take place throughout the year for motivated groups or individuals that want to make a positive impact on their parks, environment, and community.



2,257 VOLUNTEER HOURS
21,000 POUNDS OF DEBRIS
AND INVASIVE
VEGETATION REMOVED
272,400 DOG WASTE BAGS
DISTRIBUTED
688 VOLUNTEERS



DOGGIE AMBASSADOR PROJECT



The Doggie Ambassador Project mitigates pet waste in parks, trails and open spaces, with a major focus on deterring pollution of the Truckee River watershed. The project is a volunteer-driven initiative to help maintain dog waste stations throughout the City of Reno, City of Sparks and Washoe County. Volunteers service over 70 stations in 40 local parks and trails. With the help of volunteers and the community, we are significantly improving our outdoor spaces, and promoting a healthy environment for current and future generations who utilize our parks, trails and open spaces.

DID YOU TIE THE BAG?

Unsecured bags can still spread bacteria when dumped. Please clean up waste, tie bags and properly dispose of pet waste to prevent the spread of harmful bacteria. Just this one action can help keep our parks, open spaces and waterways healthy!

FISCAL SPONSORSHIP

WHAT IS FISCAL SPONSORSHIP?

Fiscal Sponsorship is a formal agreement in which Truckee Meadows Parks Foundation sponsors a community project that lacks tax-exempt status.

Why is it important?

The Parks Foundation's Fiscal Sponsorship agreements allow motivated groups of community members to seek grants, hold fundraisers and solicit tax-deductible donations under the Parks Foundation's exempt status that aligns with the Parks Foundation's mission. Through these partnerships, community members are able to get more done for local parks.

SOMERSETT WEST PARK

The Somerset Owners Association and the City of Reno partnered with Truckee Meadows Parks Foundation to create a multi-use, multi-generational neighborhood park in West Somerset. In July of 2019, construction commenced on this stunning park that will include amenities such as a community garden, family play area, a small and large dog park and connectivity to an extensive trail system.



IN 2019,
the Parks Foundation raised \$26,900
for Somerset West Park.

BIGGEST LITTLE DOG PARK

In 2017, the Biggest Little Dog Park Coalition and the City of Reno teamed up with Truckee Meadows Parks Foundation to develop a unique dog park in downtown Reno. In July of 2018, the dog park opened to provide a place for people and dogs to exercise as well as to create a positive atmosphere that will encourage economic growth.

In 2019, the Biggest Little Dog Park entered Phase II fundraising efforts. Phase II funding has installed park improvements such as the "Biggest Little Dog Park" arch, artistic pet silhouettes around the perimeter fencing and additional seating. Fundraising efforts are still underway for additional landscaping features.



IN 2019,
the Parks Foundation raised \$34,478
for the Biggest Little Dog Park.

FUTURE PROJECTS

Truckee Meadows Parks Foundation is in the early planning stages of the following projects:

- Baseball Fields at Lemmon Valley Park
- Proposed Sutcliffe Community Park
- Mira Loma Park Pickleball Courts

PARKS, TRAILS AND OPEN SPACE DISTRICT

WHY?

Our neighborhood playgrounds are in disrepair, our pools have limited operational hours and our many walking trails need to be resurfaced and renewed. Parks and recreation departments in the region are suffering from a backlog of maintenance and park capital improvement projects like never before. Despite economic recovery since the 2008 recession, parks departments continue to operate with inadequate staffing levels and pre-recession budgets resulting in significant operational issues.

WHAT CAN WE DO?

In 2017, citizens concerned with the state of our parks successfully passed legislation allowing for the formation of parks districts in Nevada (A.B. 379). A parks district will provide a dedicated funding source to sustainably maintain and enhance our parks, trails and open spaces.

A PARKS DISTRICT WILL:

IMPROVE

EFFECTIVENESS, EFFICIENCY AND ACCOUNTABILITY TO CITIZENS;

ENHANCE

OUR TRAIL AND OPEN SPACE SYSTEM;

ADDRESS

POPULATION GROWTH AND DEMANDS ON EXISTING AND NEW PARK FACILITIES AND AMENITIES;

FIX

UNFUNDED DEFERRED MAINTENANCE;

FOCUS

NEEDED ATTENTION ON PUBLIC LANDS AND PARKS ALONG THE TRUCKEE RIVER.

WHAT'S NEXT?

Initiation of a 'service plan'.

Our elected officials (county commissioners and/or city council members) must initiate a 'service plan.' This will determine the financial feasibility, boundaries and scope of responsibilities and description of services of a district. This service plan is just a first step to determine how a parks district would operate in northern Nevada. It alone would not create a new district—that step will follow with a vote of the people.

The Parks Foundation's Board of Directors supports this service plan development and is actively working to develop the strategies to forward its development. Staff will continue to keep the Parks Foundation members and community advocates informed of the progress towards this important goal.



PROPOSED TRUCKEE MEADOWS NATURE STUDY AREA

In 2019, Truckee Meadows Parks Foundation initiated the planning phase of restoring the property formerly known as Rosewood Lakes Golf Course to a functional wetland system. The vision is to establish and steward a publicly accessible Great Basin wetland habitat where the community can come to learn about and appreciate the importance of our natural open spaces and local parks.

YOU CAN SUPPORT THE FUTURE

Truckee Meadows Nature Study Area by donating today or volunteering at the next restoration cleanup event!

With a grant from the National Parks Service and support from over 30 community partners, Truckee Meadows Parks Foundation conducted multiple public forums throughout 2019 to garner community input for the design and implementation of a master plan. The master plan will be presented to Reno City Council in early 2020 with a small portion of the property opening in the late summer of 2020.

In September of 2019, AmeriCorps Wetland Restoration Technicians began their service at the proposed Truckee Meadows Nature Study Area. Members have been instrumental in beginning the restoration efforts, from removing invasive vegetation to surveying locations for future trails. The Parks Foundation's efforts will culminate in the establishment of a publicly accessible nature study area that offers an array of educational and recreational activities for community members of all ages.



REI RESTORATION DAY

On June 15th, 120 individuals participated in an extensive community clean up at the proposed Truckee Meadows Nature Study Area. Volunteers removed over 21,000 pounds of waste, debris, and invasive plant vegetation! Participants of all ages dedicated three hours of their Saturday to invest in their open spaces and waterways. This special event was made possible through partnerships with REI and American Rivers!





AMERICORPS



What is AmeriCorps?

AmeriCorps is a network of national service programs that each take a different approach to improving lives and fostering civic engagement. Members commit their time to address critical community needs such as increasing academic achievement, mentoring youth, fighting poverty, sustaining national parks, and preparing for disasters.

AmeriCorps at the Parks Foundation:

Truckee Meadows Parks Foundation recruits AmeriCorps members from around the country through the State and National program and the VISTA (Volunteers in Service to America) program.

State and National Members:

State and National members provide direct service as Naturalist Educators in the Student Stewards Program and Wetland Restoration Technicians in the Truckee Meadows Nature Study Area Project. The Naturalist Educators focus on getting students excited about STEM (Science, Technology, Engineering, Math) and teaching them how to become young stewards of their local parks. The Wetland Restoration Technicians focus on restoring a wetland habitat where the community can come to learn about and appreciate the importance of our natural spaces and local parks.

VISTA Members:

VISTA members build capacity for the organization by coordinating programs, events, volunteers, members, fundraising, and other essential components that keep the Parks Foundation functioning behind-the-scenes.

Site Placement:

The Parks Foundation places AmeriCorps VISTA and State and National members at partnering organizations. These members support the mission of the Parks Foundation in collaboration with their organizational placement.

VISTA Site Placement 2019 – 2020:

Washoe County Health District
Carson City Parks, Recreation & Open Space
City of Reno Parks, Recreation, and Community Service

State and National Host Site Placement 2019 – 2020:

Nevada Department of Wildlife
Keep Truckee Meadows Beautiful
Desert Research Institute
Wilbur D. May Arboretum
Desert Farming Initiative
The Greenhouse Project
Urban Roots
Envirolution
Carson Water Subconservancy District
River Wranglers
Sierra Nevada Journeys
One Truckee River

RECOGNIZING THOSE THAT GIVE BACK



Volunteers of the Year: Jeff & Eileen Bidwell

Jeff and Eileen Bidwell have been volunteering with the Parks Foundation since 2017. They started serving as two of our earliest and most dedicated Doggie Ambassador volunteers, and they routinely help with different events like invasive species removals and Reno DogFest. In 2019, Jeff and Eileen volunteered over 45 hours with the Parks Foundation. Time is our most valuable resource and we sincerely thank Jeff and Eileen for their generosity and dedication to serving at Truckee Meadows Parks Foundation.



Member of the Year: Nate Tippie

Nate has gone above and beyond in all aspects of stewardship and service throughout 2019. He is known for always lending a hand by participating in invasive species removals, community cleanups, guided hikes, and campout events. Nate has provided additional community support and outreach by volunteering at events such as Meet the Turkeys. Nate brings a warm smile and kind words to all he meets. We are so proud to work alongside such a vibrant and passionate young man in our community. Thank you, Nate!



Community Partner of the Year: Gear Hut

Family-owned outdoor gear consignment shop, Gear Hut, has been an outstanding community partner throughout 2019. Owners Rusty and Leah hosted the Parks Foundation as their non-profit partner of the month, truly share the Parks Foundations values and beliefs in protecting our parks and open spaces, and are exemplary Truckee Meadows Trails Challenge participants. Thank you, Gear Hut for being an important community partner!



MEMBERS

Alisa McWilliams & Ted Lambert
Amber & Justin Shore
Amber Zaliski
Amy Cavanaugh
Andre & Chase Stigall
Anita Morales
Arlene & Bill Dempsey
Armando Ornelas
Barbara Guerin
Barbara Hier-Johnson
Barbara Novak
Bev Lyles
Beverlee Starr
Bill & Gaye Wallace
Bill & Laurie Hahn
BJ Amrose
Bonnie Foard
Bruce & Kelley Gombert
Bruce Woodworth
Byllie Andrews
Camille Thompson
Carol Coleman
Carol Hunt
Carol O’Brien
Caryn Neidhold
Cater Minnis
Catherine & Maarten Kalisvaart
Catherine Schmidt
Cathy and Ed Smith
Caughlin Ranch Homeowners Association
Celia & Robert McGinty

Cheri Martin
Cherlyn Colletti
Cheryl Daniel
Chris & Ann Askin
Chris Davis
Chris Theisen
Christianne Kratka
Christopher Bristol
Christopher Henry
Christopher Tong
Colleen Wallace-Barnum
Colt & Betsy Stewart
Connor Kirby
Cynthia Yapp
Dan & Elaine Carrick
Dan and Pat Bouweraerts
Daniel Sierra
Darlene Arnold
Dave & DeLores Aiazzi
David & Debbie Jickling
David Pritchett
David Von Seggern
Dawn Nahorniak
Dawn Smith
Dean DeGidio
Deanna Ackerman
Debbie Sam Smith
Debbra King
Debby Suates
Deborah Brown
Denise & John Miller
Dennis and Sherron Elledge
Diana & Samuel Sprain

Diane Pilloud
Dominique Joseph
Don & Jean Molde
Donald Abbott
Douglas Sanford & Connie Ann Nelson-Sanford
Elise & James Florey
Elsi & Dick Reinhardt
Emily Lande-Rose
Eric Roberts
Frank & Linda Freeland
Frankie Sue Del Papa
Gail and Mark Moore
Gail Matyas
Genet & Ronald Sauer
George & Carole Hess
Glee Willis
Gloria Tomich
Gordon & Ann Milldrum
Greig Jameson
Hazel Bowen
Heather Williams
Heidi & Cory Anderson
Ilene Dighero
Irene Babcock Drews
Iris and Tom Stille
Jacque & Ernest Lowery
Jacqueline Pistorello
Jaime Schroeder
James & Laura Dickey
James Feenstra
James Noriega
Jane Burnham
Janet Hand

Janice Pine
Jeanie Onitsuka
Jeanne Brower
Jeanne Moline
Jeanne Tribble
Jeannie Drabek
Jeff & Eileen Bidwell
Jeff & Laura Reinig
Jenifer Root
Jennifer & Chris Cochran
Jennifer Carr
Jennifer Hallett
Jill Short
Jim & Betty Hulse
Jim Ayers
JoAllan Ferris
Joan & Adam Huber
Joan Watson
Jocelyn Waite
Joel & Leslie Muller
Johleen Bishop Thresher
John Gardner
John Wiskocil
Jonnie Pullman
Juan & Jane Rosales
Judith Fisher
Judith Luce
Julee Conway & David Porter
Julia Ratti & James Cavanaugh
Julie & David Campbell
Julie Savage
Julie Uren

Karen & Gary Ide
Karen Dickerson
Karen Savage
Karen Seaward
Karen Street & Peter Imbrogno
Karrie & Wayne Gay
Katherine Carr
Kathy Danaher
Kathy Pantner
Katie Palani
Kayla Riley
Kellie Fox
Kelly & Matt DeJong
Kelly Bruskotter
Kerry Small
Kristie Connolly
Kristin Szabo
Larry & Pat Metzger
Leah Lin Jones
Lee & Elisa Davis
Leilani Adamoff
Letitia & Ian Anderson
Lisa & Joe Genasci
Lois Crocker
Lone & Bob Webb
Lori & Mark Wray
Louis Bubala
Lurana Cancilla
Lynda Nelson
Maral & Reed Brady
Marc & Morgan Tiar
Marcia Growdon
Margo Zaugg

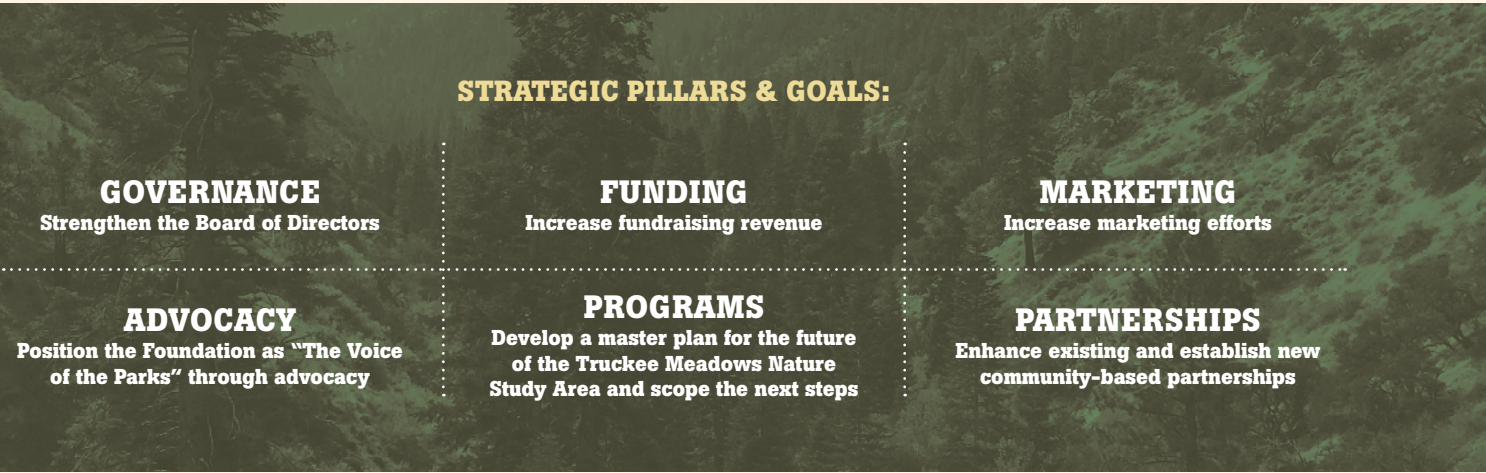
Marie Fong
Marietta Berriochoa
Mark and Jill Richardson
Mark Farman
Mark Vollmer
Martha & Jon Greene
Martha Galley
Mary Ann Hawkins
Mary Ann Leynes
Mary Lou Banta
Mary Luzier
Maureen Wilde
Melinda Torvinen
Melissa Pick
Michael & Karen Traynor
Mike Carrasco
Miranda Sanford
Nancy Cerceau
Nancy Northrup & Allen Black
Nate Tippie
Nathan & Kim Daniel
Neena & Shreesh Taskar
Nidia & Kymberly Villeda
Noah Bessette
Pam & Ken McNeil
Patricia Heath
Patricia Truskolaski
Patti Bernard
Patty Cafferata
Philip Mataruga
Polly Whealon
Rachel Rosemann
Ralph & Barbara Jaeck

Randy McNatt
Ray Hopper
Rebecca Koster
Rebekah Mileo
Regina Dunbar
Richard & Elsa Heroux
Richard McDrew & Tu Treasrau
Robert Alto
Robert Hiller
Roberto Crawford
Rod & Kathy Light
Roxanne Brown
Ryan Henningsen
Sally Crane
Sally Sapunor
Sandra Bitler
Sandra Denmon
Sarah Chvilicek
Sarah Welsh
Sarali Diaz
Scott & Brenda Cash
Shannon Cantwell
Shari Quinn
Sharon Wilcox
Sheila Erlach
Sheila Freed
Sherri Vitacca
Sondra Wildman & Tom Joseph
Stefanie Givens
Stephenie Wedin
Steve & Katie Jenkins
Steve Bloomfield, M.D.

Sue & Jim Smith
Sue Burkhamer
Sue Strom
Sue Ward
Susan & Eugene Alesevich
Susan Douglass
Susan Higgins
Susan Lee
Susan Walls
Susanne Etter
Susie Meadows
Suzanne & Steve Peters
Taylor Diamond
Terry Cox & Beth Dailey
Terry Tholl
Theresa Jones
Thomas & Cynthia Hall
Thomas & Kathleen Glynn
Tim Blake
Tina Nappe
Tom & Lorraine Burke
Tom Clark
Tracy Doren
Valerie Andersen
Veatrice Jehangir
Vic & Marina Ridgley
Virginia & John Williamson
Wendy & Scott Gable
Wes & Heather Sirotek
William Earl Sparkman
Wilma Lundahl

STRATEGIC PLAN

With an immediate need to define the organization’s future through a multi-year strategic plan, Truckee Meadows Parks Foundation’s board of directors, advisory board, staff, and government partners participated in a one-day planning session with Deanna Ackerman of Advanced Development Executives.



THE STRATEGIC PLANNING PROCESS FOCUSED ON THREE BIG QUESTIONS:

- 1 DO THE PARKS FOUNDATION’S PROGRAMS AND PROJECTS FIT WITHIN THE MISSION?
- 2 WHAT IS THE PARKS FOUNDATION DOING TO SUPPORT PARKS, OPEN SPACES, TRAILS AND GOVERNMENT PARTNERS?
- 3 HOW CAN WE EXPAND THE PARKS FOUNDATION’S REACH AND IMPACT?

GOING INTO THE STRATEGIC PLANNING PROCESS, THE GOAL WAS TO ESTABLISH A PLAN THAT INCLUDED:

- 1 RE-ARTICULATION OF THE MISSION.
- 2 CONCEPTUALIZATION OF A FOCUSED PARKS FOUNDATION THAT IS MORE PURPOSEFUL IN ITS NICHE.
- 3 CONSENSUS ON AGREED GOALS FOR THE NEXT THREE YEARS.

The strategic planning session facilitated a common direction and a shared vision of the future. In implementing the Strategic Plan, the Parks Foundation is taking a comprehensive approach—one that recognizes the immediate need to continue programming and advocacy, while also putting resources into the future of the Truckee Meadows Nature Study Area.



MEMBERSHIP

Inspire lifelong connection with our outdoor spaces by donating today!

Truckee Meadows Parks Foundation is a private, non-profit organization committed to raising awareness and appreciation of parks, open spaces and trails through in-park programs offered free-of-cost to community members. Programs operating under the Parks Foundation’s *Healthy Parks Healthy People: Truckee Meadows* initiative are designed to connect community members with nature while providing outdoor experiences for some of our most vulnerable community members.

Name _____

Address _____ City _____ State _____ Zip _____

Email _____ Phone _____

PROGRAM SPONSORSHIP MEMBERSHIP

Become a member by making a direct donation to sponsor one of the following programs:

- ☐ **\$125** Sponsor a Discover Your Parks walk for 65 people.
- ☐ **\$275** Support a classroom in an underserved school participating in the Student Stewards Program.
- ☐ **\$550** Provide enough supplies for one week of Student Stewards Spring Break or Summer Science Camp.
- ☐ **\$800** Plant 16 native trees at the Truckee Meadows Nature Study Area as part of the Wetland Restoration Program.

ANNUAL MEMBERSHIP LEVELS

- ☐ **\$50** Individual
- ☐ **\$100** Family
- ☐ **\$250** Park Pal
- ☐ **\$500** Park Steward
- ☐ **\$750** Park Patron
- ☐ **\$1,000** Park Champion
- ☐ **CHOOSE YOUR OWN** \$ _____
- ☐ **SUSTAINING MEMBER** \$ _____*

OR

* Amount we charge your card each month

PAYMENT INFORMATION

CREDIT CARD

Name on Card _____

Card # _____

Amount \$ _____ CC Type (i.e. Visa) _____

Exp: _____ / _____ CSV Code _____

Signature _____

CHECK

Make check payable to:

TMPF
50 Cowan Drive
Reno, NV 89509

CASH

Cash Amount \$ _____



MAIN OFFICE

50 COWAN DR.
RENO, NV 89509
(775) 410-1702

NATURE STUDY AREA OFFICE

6800 PEMBROKE DR.
RENO, NV 89502
(775) 360-6068

WWW.TMPARKSFUNDATION.ORG

