

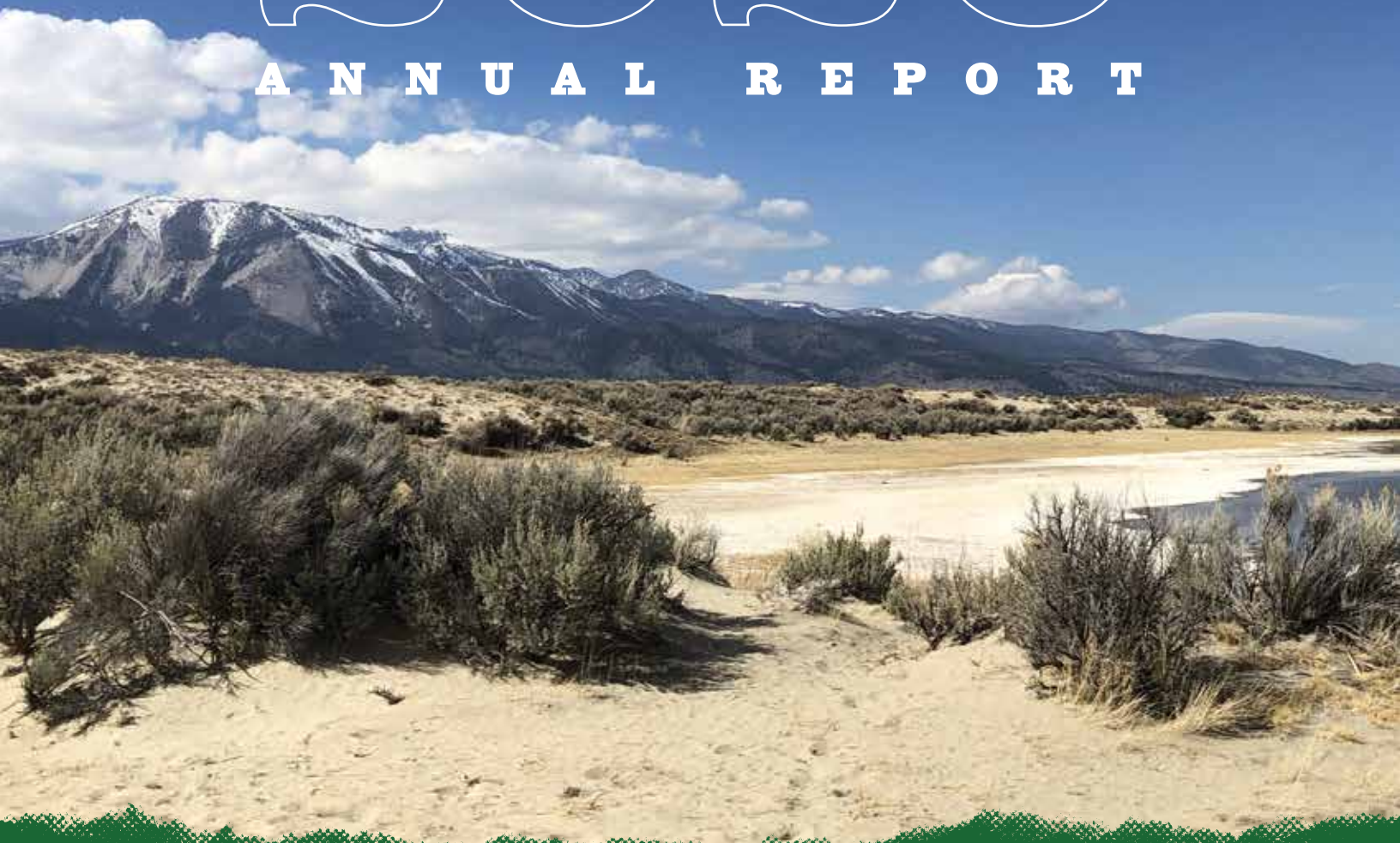


# TRUCKEE MEADOWS PARKS FOUNDATION

AWARENESS • APPRECIATION • STEWARDSHIP

# 2020

## ANNUAL REPORT



6

THE STATE OF  
OUR PARKS

7

BY THE  
NUMBERS

8

PROGRAMS  
& EVENTS

12

TRUCKEE MEADOWS  
NATURE STUDY



# DEAR FRIENDS *of the* PARKS FOUNDATION

**We are happy to be writing to you today with the year of 2020 behind us.**

As fear, worry, and stress seemed to consume our daily lives, we knew our parks and open spaces were going to play a vital role in our community's healing. The COVID-19 pandemic and resulting economic recession have created a multitude of barriers to mental and physical health but embracing our green spaces is a key step to our recovery.

Amongst it all, we are proud to say the Parks Foundation was able to keep our programs running and continued to engage with our students, community members and volunteers. Our Student Stewards program turned virtual right alongside our school districts and our Trails Challenges, Discover Your Park walks and Junior Naturalists program became self-guided as materials were delivered to community members. Our AmeriCorps members transitioned to serving from home, something that has never been done before. Together, the Parks Foundation communicated, planned, laughed, cried, and created a truly unique experience for our community during our toughest year yet.


As we hope to see the light soon, we know our members are eager to get back to our regular programming, and we are excited to do just that—and more. This year showcased the deep need of outdoor spaces and the lack of resources for communities. The Parks Foundation knows this recession will continue to affect Parks and Recreation state and federal budgets and we stand ready, with the help of our supporters, to continue to advocate for our open spaces.

We are delighted to share the results of our hard work in 2020 and all that was accomplished.

Sincerely,



Heidi Anderson, Executive Director



Sarah Chvilicek, Board President



# MISSION

Truckee Meadows Parks Foundation protects and enhances our communities' livability through public engagement, education, and the sustainability of our parks, open spaces, and trails.

## GOALS

### PROVIDE

innovative park-based programs for families, community groups and schools

### CULTIVATE

awareness, appreciation and stewardship of our parks

### INSPIRE

community members to take a proactive volunteer role in the preservation and improvement of our parks.

### SERVE

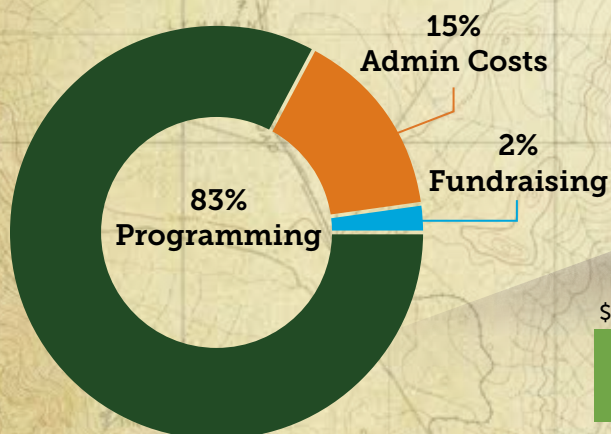
as a fiscal sponsor for community-led initiatives to enhance park infrastructure.

### STRENGTHEN

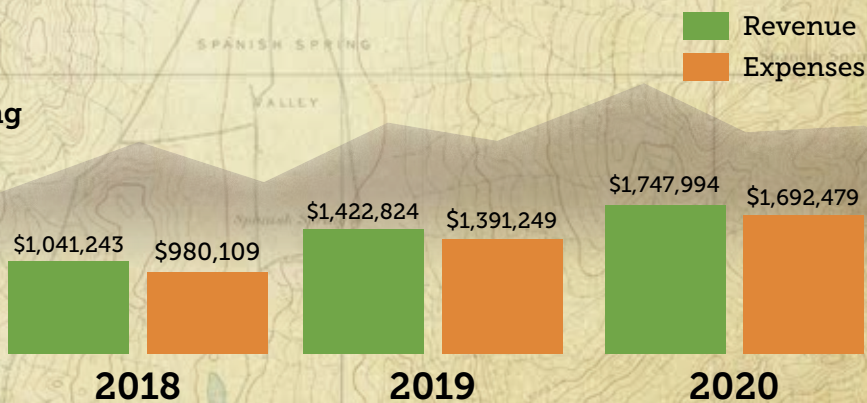
the bond between community members and their parks



## FINANCIALS AT A GLANCE



2020 Expenditures



Revenues & Expenses



# BOARD MEMBERS



**Sarah Chvilicek**  
*President*



**Dawn Smith**  
*Vice President*



**David von Seggern**  
*Treasurer*



**David Jickling**  
*Board Director*



**Tina Nappe**  
*Board Director*



**Sophia Kirschenman**  
*Board Director*



**Katie Palani**  
*Board Director*



**Nate Tippie**  
*Board Director*

# STAFF



**Heidi Anderson**  
*Executive Director*



**Karly Bristol**  
*Communications and  
Operations Director*



**Sarah Holcombe**  
*Development Director*



**Elena Larsen**  
*Wetland Restoration  
Program Director*



**Devin Genovese**  
*Student Stewards  
Program Director*



**Hannah Lansverk  
Sonnenberg**  
*Student Stewards  
Program Manager*



**Chantel Dominguez**  
*Programs and  
Events Manager*



# AMERICORPS MEMBERS



**Alayna Wood**  
Communications  
Coordinator



**Alex Shahbazi**  
Parks Project  
Coordinator



**Alexandra Sheehan**  
Wetland Restoration  
Outreach Coordinator



**Bridget Mulkerin**  
Programs and Events  
Coordinator



**Caitlin Amburgey**  
Community Programs  
Educator



**Camille Iannacchione**  
Membership  
Coordinator



**Camille Verendia**  
Wetland Restoration  
Technician



**Cara Schaefer**  
Community Programs  
Educator



**Colleen Searcy**  
Naturalist Educator



**Courtney Arrington**  
Resource Development  
Coordinator



**Danny Whitaker,**  
Naturalist Educator



**Haley Grable**  
Student Stewards  
Outreach Coordinator



**Kayleigh Dearstyne**  
Naturalist Educator



**Keaton Aldrich**  
Naturalist Educator



**Kristina Lee,**  
Naturalist Educator



**Macklin McSorley**  
Lead Wetland  
Restoration Technician



**Matthew Poindexter**  
Wetland Restoration  
Technician



**Micah Beck**  
VISTA Leader



**Rachel Dunn**  
Naturalist Educator



**Spencer Cox,**  
Community Engagement  
Coordinator



**Rachel Kieffer**  
Lead Wetland  
Restoration Technician



**Sam Lee**  
Wellness Education  
Coordinator



**AmeriCorps**



# THE STATE OF OUR PARKS

Parks departments in the Truckee Meadows continue to operate on a fraction of their pre-recession budgets. This has led to severe service reductions and infrastructure deterioration at our local facilities.

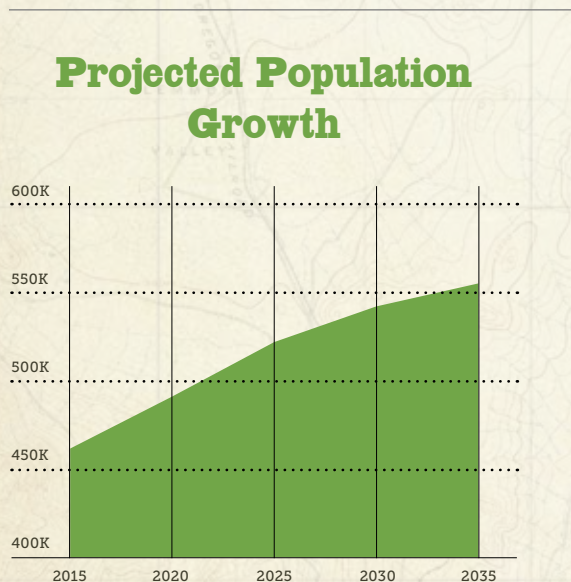


In 2020, the role of the Foundation became even more relevant as the nation, region and local governments faced the economic effects of the global pandemic. Meanwhile, citizens sought refuge in our local parks, trails, open spaces to find renewal and peace and continued to work towards their fitness goals in a safe, outdoor environment. Compounded by the reduction in tax revenue receipts, municipal and county parks and open space department budgets are projected to be reduced even further through 2022 and beyond.

## FACILITIES AND AMENITIES

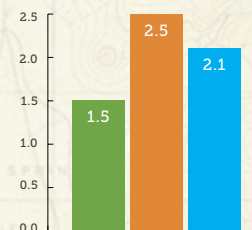
Community demand to fill the gaps and provide more

- Common feedback
- Not enough pools
- Need more flat field space
- Not enough dog parks
- Not enough rec centers

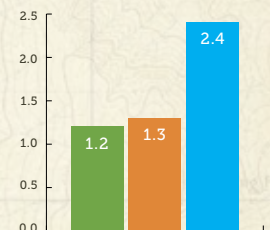


## Comparison of Availability of Select Amenities

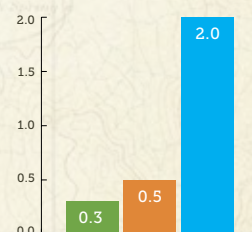
**Pools**  
100,000 residents



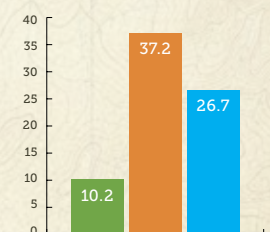
**Flat Fields**  
10,000 residents



**Recreation Centers**  
20,000 residents



**Natural Acres**  
1,000 residents





# 2020 BY THE NUMBERS

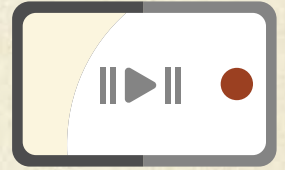
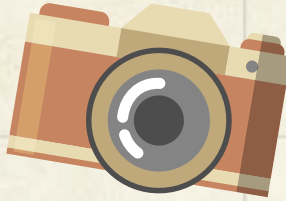


**3,500**

OUTDOOR  
EDUCATION HOURS

**83**

PHOTO  
SUBMISSIONS



**24,203**

VIDEO VIEWS



**107**

AMERICORPS  
MEMBERS PLACED IN  
NORTHERN NEVADA



**154**

SCIENCE CAMP  
SCHOLARSHIPS



**\$1,670,218**

SECURED TO SUPPORT  
PARK-BASED  
PROGRAMS & EVENTS



**461,400**

DOG WASTE BAGS  
DISTRIBUTED

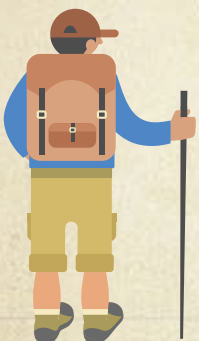


**2,055**

VOLUNTEER  
HOURS

**\$77,775**

RAISED FOR FISCAL  
SCHOLARSHIP



**343**

ACTIVE  
MEMBERS



# PROGRAMS & EVENTS

## STUDENT STEWARDS PROGRAM

The Student Stewards Program turns local parks into learning laboratories where students are able to connect with nature and practice hands-on science outdoors. The Science, Technology, Engineering, Math and Next Generation Science Standards-based curriculum is designed to inspire young students to care for our parks, trails and open spaces throughout their lives. AmeriCorps Naturalist Educators are hard at work teaching economically underserved Washoe County students how to collect science data on birds, insects, water and soils.

**2020 DETOUR:** The Student Stewards Program transitioned to a virtual model and continued serving our students and families. Educators created distance learning packets and a Student Stewards Science YouTube channel. Videos cover a variety of STEM topics from geology to Nevadan history.



**2,045** video views  
**150** families received Distance Learning Packets



**297** camp spots filled  
**154** campers received scholarships

## STUDENT STEWARDS SPRING BREAK AND SUMMER CAMPS

Most years, camp is held for two weeks in the spring and nine weeks in the summer, helping students discover the natural world around them. These STEAM (science, technology, engineering, arts, and math)-based camps in Idlewild Park support educators, parents and students by providing highly impactful experiences that expand on classroom content. Camp encourages students to develop curiosities, uncover passions and begin a lifelong love of and appreciation for the natural world. Need-based scholarships are available for children who could not otherwise attend camp.

**2020 DETOUR:** Unfortunately Spring Break Camp was cancelled, but despite continued challenges, a reduced capacity Summer Camp was still run during the summer of 2020. During an unprecedented year of social isolation, one parent told the Parks Foundation, "We'll never be able to measure how your camp impacted the children in our community, but I am certain the effects are vast, far-reaching, and life long."

## TRUCKEE MEADOWS TRAILS CHALLENGE

Community members of all ages can harness the power of the outdoors to benefit their physical and mental health through the self-guided, goal-oriented Truckee Meadows Trails Challenge. As part of the Trails Challenge, the Parks Foundation hosts monthly guided hikes that engage participants in the exploration of local natural and cultural history while getting out and getting healthy.

**2020 DETOUR:** The Parks Foundation remained dedicated to providing Trails Challenge participants with interactive educational materials to inspire exploration of their local trails, both virtually and in-person. Trails Challenge participants were encouraged to set a goal, explore their open spaces, and reap the benefits that parks have on their physical, spiritual, and mental health.



**376** video views  
**5** virtual trail guides



**21,782** video views  
**18** virtual park tours

## DISCOVER YOUR PARKS WALKS

From April through September, community members explored the natural and cultural history of our region through the weekly Discover Your Parks Walks. Participants build healthy habits, while connecting with new outdoor spaces every Thursday evening. Walks are free, approximately one-mile and one-hour long.

**2020 DETOUR:** Walks continued when able, and allowed community members of all ages and abilities to visit local parks, trails and open spaces in the Truckee Meadows. When unable to host in person walks, activities became virtual and participants were encouraged to get outdoors on their own.



## JUNIOR NATURALIST PASSPORT PROGRAM

Children of all ages and backgrounds investigate their public lands and participate in hands-on science each month during the Junior Naturalist Passport Program. Each session provides nature and science lessons along with arts and crafts activities. With a Junior Naturalist Passport, children explore a different park each month focusing on varying habitats found around Northern Nevada.

**2020 DETOUR:** Participants were encouraged to continue exploring with their passports and emailed monthly with additional self-guided crafts and activities.



**126** in-person passports  
**150** self-guided passports



**8** pre-COVID walks  
**30** newsletters

## DEMENTIA-FRIENDLY NATURE WALKS

Every week, individuals living with dementia and their carepartners are able to connect with the natural world through the Dementia-Friendly Nature Walks. These free, interpretive walks take participants through an exploration of seasonal change along the Truckee River.

**2020 DETOUR:** All Dementia-Friendly Nature Walks turned into virtual newsletters, where participants got the chance to continue exploring the seasonal changes of flora and fauna.

## 2020 EVENTS HIGHLIGHTS



### GREAT COMMUNITY CLEAN-UP & TRUCKEE RIVER CLEAN-UP

Every year the Parks Foundation hosts KTMB's Great Community and Truckee River Cleanups at Idlewild Park. This year, 48 volunteers removed 70 bags of invasive species and mulched over 50 trees.

### BLUE MOON HIKE

On Halloween, the Truckee Meadows Parks Foundation invited the community to the proposed Nature Study Area to observe and learn all about the Blue Moon! Participants took a guided sunset hike around the wetland property then watched the Blue Moon rise over the eastern hilltops.



### FALL PLANTEMONIUM

The Parks Foundation was excited to host an outdoor and socially distanced volunteer opportunity again for the community. Over 60 volunteers planted 750 native species of willows, cottonwoods, buffalo berries and sedges at the Nature Study Area.



# STEWARDSHIP THROUGH VOLUNTEERISM

Truckee Meadows Parks Foundation was fortunate to have continued outstanding volunteers during 2020. While opportunities were more limited, the Doggie Ambassador Project, Regional Park Research, and a Plantemonium event kept our volunteers engaged.

Ongoing positions and volunteer opportunities take place throughout the year for motivated groups or individuals that want to make a positive impact on their parks, environment, and community.

IN 20 20	2,055	Volunteer Hours
	10,000	Pounds of green waste and trash removed from the proposed Nature Study Area and Idlewild Park
	23	Parks Researched
	49	Doggie Ambassadors



## DOGGIE AMBASSADOR PROJECT

IN 461,400  
20 Dog Waste Bags  
20 Distributed

The Doggie Ambassador Project mitigates pet waste in parks, trails and open spaces, with a major focus on deterring pollution of the Truckee River watershed. The project is a volunteer-driven initiative to help maintain dog waste stations throughout the City of Reno, City of Sparks and Washoe County. Volunteers service over 70 stations in 40 local parks and trails. With the help of volunteers and the community, we are significantly improving our outdoor spaces, and promoting a healthy environment for current and future generations who utilize our parks, trails and open spaces.





# FISCAL SPONSORSHIP

## WHAT IS FISCAL SCHOLARSHIP?

Fiscal Sponsorship is a formal agreement in which Truckee Meadows Parks Foundation sponsors a community project that lacks tax-exempt status.

## WHY IS IT IMPORTANT?

The Parks Foundation's Fiscal Sponsorship agreements allow motivated groups of community members to seek grants, hold fundraisers and solicit tax-deductible donations that align with the Parks Foundations mission. Through these partnerships, community members are able to get more done for local parks.



Over  
**400 PETS**  
have now been  
painted at the  
Biggest Little Dog  
Park mural!

## ➤ BIGGEST LITTLE DOG PARK

Since 2017, the Biggest Little Dog Park Coalition and the City of Reno have worked with Truckee Meadows Parks Foundation to develop a unique dog park in downtown Reno. In July of 2018, the dog park opened to provide a place for people and dogs to exercise as well as to create a positive atmosphere that will encourage economic growth.

**In 2020**, the Biggest Little Dog Park has continued to fundraise for ongoing landscape needs. The Biggest Little Dog Park mural has been completed with local pets featured along the park mural.

## ➤ SOMERSETT WEST PARK

The Somersett Owners Association and the City of Reno partnered with Truckee Meadows Parks Foundation to create a multi-use, multi-generational neighborhood park in West Somersett.

**In 2020**, a community garden, family play area, small and large dog park, and connectivity to an extensive trail system was built.

# PARKS, TRAILS AND OPEN SPACE DISTRICT

The need to plan for the funding of our parks, trails, open spaces and recreation facilities is no different than the planning of our sewer, water, and road infrastructure that is routinely dealt with by our cities and county. Effective planning that includes funding (such as a Parks, Trails, and Open Space District) is critical to the long-term health and future of our park & open space systems.

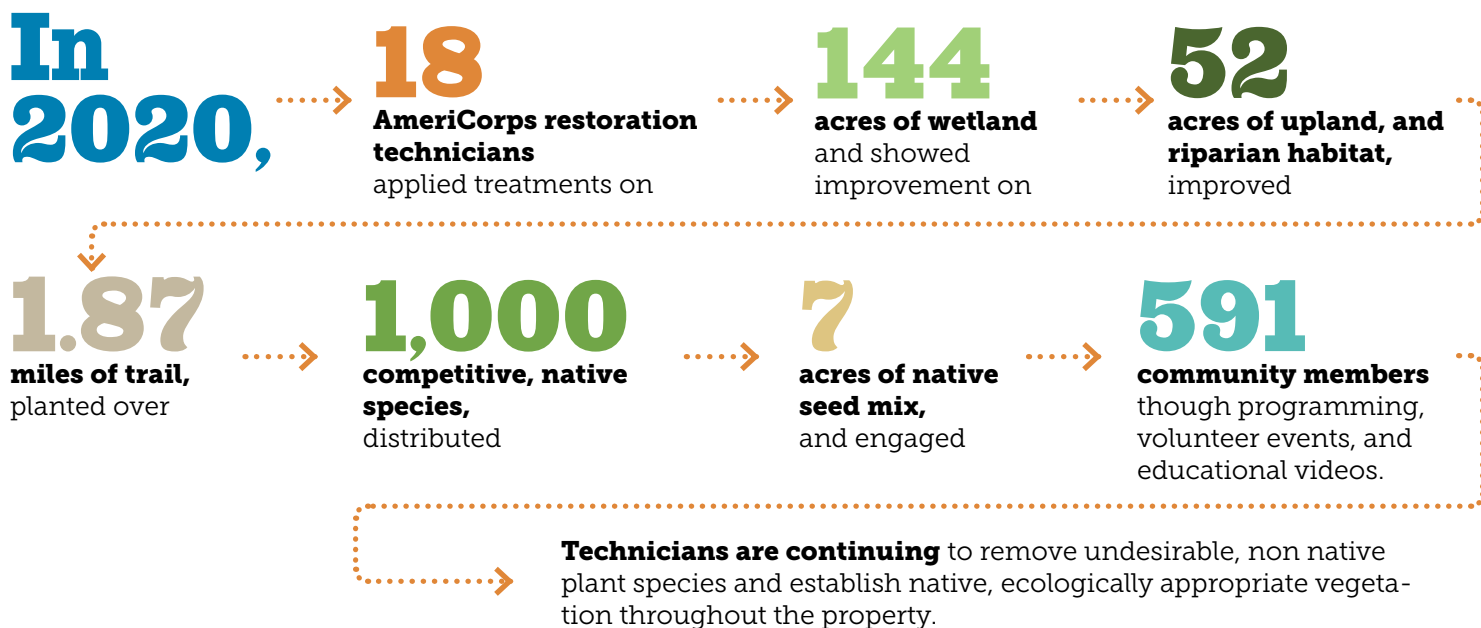
## Future Plans

The development of a region-wide Service Plan remains a top priority for the Parks Foundation Board. This Service Plan will establish how a Parks, Trails and Open Space District could function in Northern Nevada. Although the Parks Foundation can be instrumental in securing the funding needed to support the development of the Service Plan, it is up to the local governmental agencies to decide to initiate the process and complete the Plan, either individually or collectively.



# TRUCKEE MEADOWS NATURE STUD

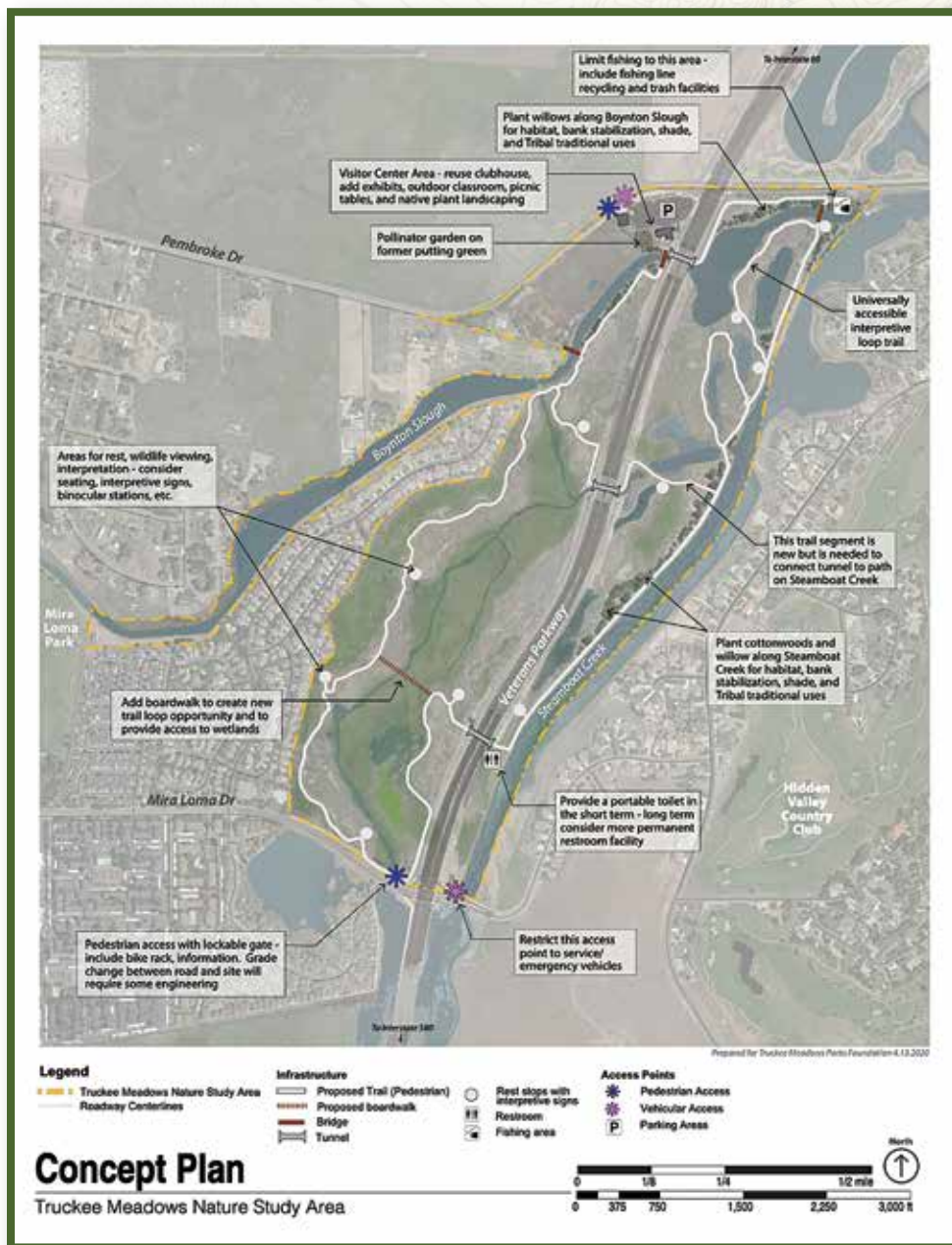
**TRUCKEE MEADOWS PARKS FOUNDATION IS WORKING TO REHABILITATE** the area formerly known as the Rosewood Lakes Golf Course to a functional wetland system. This will be accomplished through the efforts of AmeriCorps members, Parks Foundation Staff, and our partners. Through these efforts the property will reopen as a public space where community members can learn about the environment and spend time in nature.



Americorps Wetland Restoration Technicians built and installed 6 floating gardens and 15 bird nesting boxes.



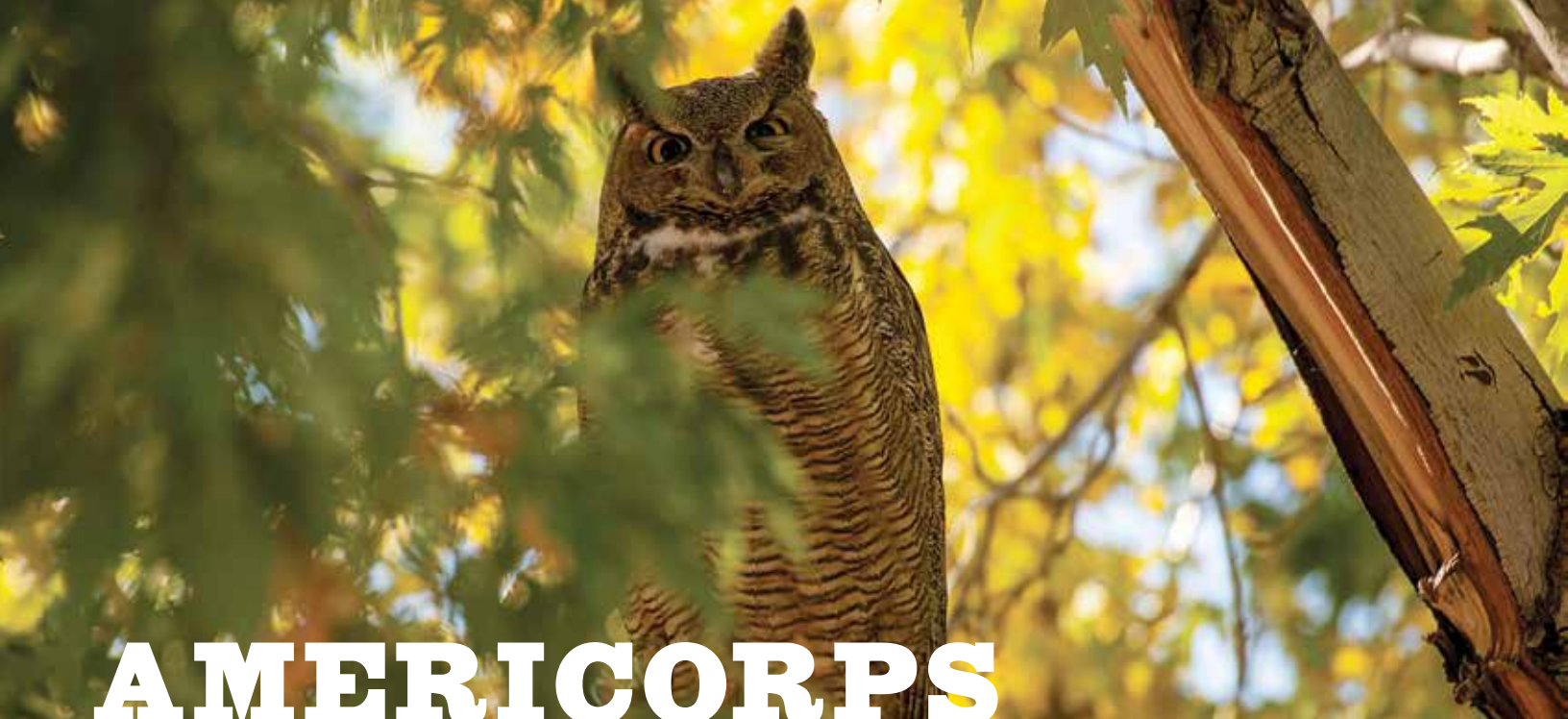




## 2020 PARTNERS







# AMERICORPS



**AmeriCorps**

## What is AmeriCorps?

AmeriCorps is a network of national service programs that each take a different approach to improving lives and fostering civic engagement. Members commit their time to address critical community needs such as increasing academic achievement, mentoring youth, fighting poverty, sustaining national parks, and preparing for disasters.

### AmeriCorps at the Parks Foundation:

Truckee Meadows Parks Foundation recruits AmeriCorps members from around the country through the State and National program and the VISTA (Volunteers in Service to America) program.

### State and National Members:

State and National members provide direct service as Naturalist Educators in the Student Stewards Program and Wetland Restoration Technicians at the Truckee Meadows Nature Study Area. The Naturalist Educators focus on getting students excited about STEM (Science, Technology, Engineering, Math) and teaching them how to become young stewards of their local parks. The Wetland Restoration Technicians focus on restoring a wetland habitat where the community can come to learn about and appreciate the importance of our natural spaces and local parks.

### VISTA Members:

VISTA members build capacity for the organization by coordinating programs, events, volunteers, members, fundraising, and other essential components that keep the Parks Foundation functioning behind-the-scenes.

### Site Placement:

The Parks Foundation places AmeriCorps VISTA and State and National members at partnering organizations. These members support the mission of the Parks Foundation in collaboration with their organizational placement.

### VISTA Site Placement 2020-2021:

Envirolution  
Lahontan Audubon Society  
Carson City Parks, Recreation & Open Space  
City of Reno Parks, Recreation, and Community Service  
Sierra Nevada Journeys

### State and National Host Site Placement 2020-2021:

Nevada Department of Wildlife  
Keep Truckee Meadows Beautiful  
Desert Research Institute  
Wilbur D. May Arboretum  
Desert Farming Initiative  
The Greenhouse Project  
Envirolution  
Carson Water Subconservancy District  
River Wranglers  
One Truckee River



# RECOGNIZING THOSE THAT GIVE BACK

## Volunteer of the Year: Ben

Ben is an active volunteer with the Student Stewards Program, the Nature Study Area and other programs and events. As a biologist and avid birder, Ben helped design and implement bird survey protocols, taught AmeriCorps technicians how to identify local birds, and consulted on many avian related questions. Ben is also a frequent guest speaker at Summer Camp, teaching students about chickadees, caching, and what it is like to be a biologist. Beyond his birding knowledge, Ben jumps in with whatever the Parks Foundation is in need of from event preparation, park clean-up, donating media for virtual programming, or guest interpreting for a Discover Your Park Walk. Thanks for being a park pal, Ben!



## Community Partner of the Year: Nevada Bugs & Butterflies

Nevada Bugs and Butterflies has been an advocate for the Truckee Meadows Nature Study Area since the project began. Nevada Bugs and Butterflies Board President, Kevin Burls, continues to be involved as a Nature Study Area Advisory board member and is a priceless resource for answering the array of questions from staff and AmeriCorps members. Kevin advises on noxious weed management practices, as well as spearheading the planning of the pollinator garden, building a butterfly house and implementing butterfly monitoring at the wetland.

## Members of the Year: Colt and Betsy Stewart

Colt and Betsy Stewart are both enjoying their retirement and spending their free-time supporting access to Truckee Meadows open spaces. They have a long history of supporting community science within the Student Stewards program and advocating for underserved youth in their community. Colt and Betsy are also supporters of the Truckee Meadows Nature Study Area and have helped contribute to the area's success. Often, you will find them enjoying a "Discover Your Park" walk and are still hoping to see those informative TMPF Talks make a comeback. We couldn't do what we do without members like them!






# MEMBERS

Alan Gubanich	Catherine & Maarten Kalisvaart	Debbra King	Hazel Bowen
Alisa McWilliams & Ted Lambert	Catherine Schmidt	Deborah Brown	Heidi & Cory Anderson
Allen Flanigan	Cathy and Ed Smith	Debra Zalmana	Helena Russell
Amber & Justin Shore	Caughlin Ranch Homeowners Association	Denise & John Miller	Interpretive Gardens
Amy & Gaston Leyak	Celia & Robert McGinty	Denise Rupracht-Price	Irene Babcock Drews
Amy Cavanaugh	Charlene Rio	Dennis and Sherron Elledge	Israel Gonzalez
Andre & Chase Stigall	Cheryl Daniel	Deri Bowen	Jacque & Ernest Lowery
Angela Kluck	Chris Davis	Diana & Samuel Sprain	Jaime Rusche
Anita Morales	Christian Villagomez	Diana Peralta	Jaime Schroeder
Annicke Bradford	Christine Mattison	Diana Perkins	Jaime Villarino
Armando Ornelas	Christopher & Karly Bristol	Diane & Joseph Pilloud	James & Laura Dickey
Audubon Society	Christopher Henry	Don & Claire McFall	James & Vicki Gardner
Barbara Guerin	Christopher Tong	Don & Jean Molde	James Feensta
Barbara Hier-Johnson	Chuck Coronella	Don Colton	James Noriega
Barbara Novak	Cindy Ainsworth	Donald Abbott	Jane Burnham
Barbara Ristine	CJ Gleason	Douglas Sanford & Connie Ann Nelson-Sanford	Jane Scott
Belen Figueroa-Cazares	Colleen Wallace-Barnum	Elayne Frank	Janet Hand
Betty & John Stanko	Colt & Betsy Stewart	Elisa Cafferata	Janice Pine
Bev Lyles	Connor & Haley Kirby	Elsi & Dick Reinhardt	Jean Green
Beverlee Starr	Craig Conrath & Brooke Walker	Emily Lande-Rose	Jeanie Onitsuka
Beverly & David Eiswert	Dan & Elaine Carrick	Emily Montan	Jeanne Moline
Bill & Gaye Wallace	Dan and Pat Bouweraerts	Eric & Joan Larsen	Jeanne Tribble
Bill Fant	Dana Shelton	Eric March	Jeff & Eileen Bidwell
Bill von Phul & Lynda Knepper	Daniel Goodnow	Eric Roberts	Jeff & Laura Reinig
BJ Amrose	Daniel Sierra	Ernie Baragar	Jeni McMahon
Bob Schichnes & Dawn Durbin	Darcy & Ralph Phillips	Esther Walters	Jenifer & Brian Root
Brett and Brittney Jenkins	Darla Lee	Evan LaGuardia	Jennifer & Chris Cochran
Bridget Speer-Loring	Dave & DeLores Aiazzi	Frankie Sue Del Papa	Jennifer Carr
Bruce & Kelley Gombert	Davene Kaplan	Gail and Mark Moore	Jennifer Hallett
Bruce Woodworth	David & Debbie Jickling	Gail Matyas	Jessica Duran
Byllie Andrews	David von Seggern	Genet & Ronald Sauer	Jessica Mahon
Carl & Marcie Iannacchione	Dawn Brisbane	George & Carole Hess	Gail Matyas
Carol & Sam Coleman	Dawn Smith	Glee Willis	Jill Short
Carol Hunt	Dean DeGidio	Gloria Tomich	Jim & Betty Hulse
Carole King	Deanna Ackerman	Gordon & Ann Milldrum	Jim Bernardi & Duane Dooley
Carrie Tichenor	Debbie Smith	Gregory & Becky Shorts	JoAllan Ferris
Caryn Neidhold		Gregory Knott	Jocelyn Waite
			Joe Decaria





Joel & Leslie Muller  
Johleen Bishop Thresher  
John & Angiolina Wiskocil  
John Louie & Neva Donovan  
Jonnie Pullman  
Jonnie Pullman  
Jordan Hosmer-Henner  
Jordan Hughes  
Jose Cruz-Orzco  
Juan & Jane Rosales  
Judith Fisher  
Judith Lockwood  
Judith Luce  
Julee Conway & David Porter  
Julia Ratti & James Cavanaugh  
Julianne Telles  
Julie Kalisiak  
Julie Robertson  
Julie Savage  
Julie Uren  
Karen & Gary Ide  
Karen & Jeffrey Ross  
Karen Critor  
Karen Savage  
Karen Seaward  
Karen Street & Peter Imbrogno  
Karrie & Wayne Gay  
Katherine Carr  
Katherine Odynski  
Kathy Bobseine  
Kathy Danaher  
Kathy Pantner  
Katie Palani  
Kelly DeJong  
Kerry Small  
Kevin Meuer  
Kimberley Johnson  
Kristin Szabo  
Kwan & Madeline Soo  
Larry & Pat Metzger  
Larry Nussbaum  
Leah Lin Jones  
Lee & Elisa Davis  
Leilani Adamoff

Leslie Smith  
Lisa & Joe Genasci  
Lois Crocker  
Lone and Bob Webb  
Lori & Mark Wray  
Lori Bellis  
Louis Bubala  
Lurana Cancilla  
Marc & Morgan Tiar  
Margaret McCall  
Margaret Talso  
Margo Zaugg  
Marie Fong  
Mark & Shelley Brant  
Mark and Jill Richardson  
Mark Vollmer  
Marla Mentaberry  
Martha & Jon Greene  
Martha Galley  
Mary Ann Leynes  
Mary Cramer  
Mary Ellen Horan  
Mary Hicks  
Mary Lou Banta  
Maureen Groach  
Melinda Torvinen  
Melissa Yerxa  
Merdene Hess  
Michael and Karen Traynor  
Michael Keys  
Michael Lynch  
Mike Escobar  
Miranda Sanford  
Nan & Michael Fleming  
Nancy Cerceau  
Nancy Northrup & Allen Black  
Nancy Witstine  
Nate Tippie  
Nathan and Kim Daniel  
Neena & Shreesh Taskar  
Nick & Cheri Martin  
Noah Bessette  
Olga Ilchuk  
Pam & Ken McNeil

Pamela DelPorto  
Pat Keough  
Patricia Gates  
Patricia Moen  
Patricia Patton  
Patricia Truskolaski  
Patty Cafferata  
Patty Smit  
Penelope Harlass  
Peter & Sue Strom  
Rachel Rosemann  
Ralph & Barbara Jaeck  
Randy McNatt  
Ray Hopper  
Rebecca Koster  
Rebekah & Will Woolsey  
Rebekah Mileo  
Regina Dunbar  
Regina O'Shea-Hockett  
Reno/Sparks Scheels  
Richard & Elsa Heroux  
Richard McDrew & Tu Treasrau  
Robert Hiller  
Roberto Crawford  
Robin & Wayne Holland  
Rod & Kathy Light  
Roger & LuAnne Steininger  
Roger Collins  
Roxanne Brown  
Ryan Henningsen  
Sally Crane  
Sally Sapunor  
Sandra Backus  
Sandra Bitler  
Sarah Chvilicek  
Sarah Holcombe  
Sarah Welsh  
Scott & Brenda Cash  
Shana Rheault  
Shari Quinn  
Sharisse Chavez  
Sharon Holland  
Sharon Wilcox  
Sheila & Joe Erlach

Sheila Freed  
Shelley Waclo  
Sherri Vitacca  
Sherrie & Rick Chaplin  
Sherrie Cartinella  
Sherry Burns Sullivan  
Sierra Club Great Basin Group  
Sondra Wildman & Tom Joseph  
Sophia Johnson  
Sophia Kirschenman  
Stephen & Elizabeth Morro  
Stephenie Wedin  
Steve & Katie Jenkins  
Steve Bloomfield, M.D.  
Steven Gibbons  
Sue & Jim Roberts  
Sue Burkhamer  
Sue Ward  
Susan & Richard James  
Susan Douglass  
Susan Lee  
Susan Walls  
Susanne Etter  
Susie Meadows  
Suzanne & Steven Peters  
Tami & Jay Levine  
Taylor Diamond  
Ted & Jennifer Files  
Terri Durgin  
Terry Cox & Beth Dailey  
Terry Tholl  
Therese Rice-Dietrich  
Thomas & Cynthia Hall  
Thomas & Kathleen Glynn  
Tina Nappé  
Tom & Dayton Miller  
Tom & Lorraine Burke  
Tom Clark  
Valerie Andersen  
Veatrice Jehangir  
Vic & Marina Ridgley  
Virginia & John Williamson  
Wes & Heather Sirotek  
Wilma Lundahl





# THE FUTURE IS DIVERSITY, EQUITY AND INCLUSION

On the heels of an economic collapse caused by COVID-19—that is said to have triggered the most unequal recession in modern U.S. history—we have launched our Diversity, Equity and Inclusion Task Force.

The extent to which the pandemic has affected minority households in our community is beyond comprehension. BIPOC (Black, Indigenous, and People of Color) communities have always faced disparities, and these can no longer be ignored. While minorities and low-income families continue to struggle to get back on their feet, the Parks Foundation is committed to ensuring our Parks, Trails, and Open Spaces are available as a mental and physical health resource for all.

## In 2021 Truckee Meadows Parks Foundation will

- Increase our programming and materials that are available in Spanish
- Participate in the equity learning community
- Invest in training for Staff and AmeriCorps members
- Incorporate native history into our programming in partnership with Northern Nevada Native Tribes
- Adjust recruitment methods to expand access to AmeriCorps, staff, and board member positions to reach all communities
- Continue to lift up environmental BIPOC leaders

With the help of the Equity Learning Community we aim to create waves that ripple across the region. We will continue to have tough conversations that will help build racial equity in our community. We will complete our Diversity, Equity, and Inclusion action plan. We will create a brave space for our staff, AmeriCorps members, and Board members to learn and grow.





# MEMBERSHIP

PARKS AND OPEN SPACES ARE NEEDED NOW MORE THAN EVER.

Truckee Meadows Parks Foundation is a private, non-profit organization committed to raising awareness and appreciation of parks, open spaces and trails through in-park programs offered free-of-cost to community members. In 2020 we saw the critical need for our programs more than ever. More community members connecting with their local nature and more students needing our STEAM education programs.

Name \_\_\_\_\_

Address \_\_\_\_\_ City \_\_\_\_\_ State \_\_\_\_\_ Zip \_\_\_\_\_

Email \_\_\_\_\_ Phone \_\_\_\_\_

## Program Sponsorship Membership

Become a member by making a direct donation to sponsor one of the following programs:

- ☐ **\$125** Sponsor 75 children to get outdoors with a Junior Naturalist lesson.
- ☐ **\$275** Support a classroom learning vital STEAM education through the Student Stewards Program.
- ☐ **\$550** Provide supplies for one week of Summer Science Camp.
- ☐ **\$800** Contribute to the installation of a 3-mile trail at the proposed Truckee Meadows Nature Study Area

## Annual Membership Levels

- ☐ **\$50** Individual
- ☐ **\$100** Family
- ☐ **\$250** Park Pal
- ☐ **\$500** Park Steward
- ☐ **\$750** Park Patron
- ☐ **\$1,000** Park Champion

**OR**

**Choose your own** \$ \_\_\_\_\_

**Sustaining Member** \$ \_\_\_\_\_ \*

*\*Amount we charge your card each month*

## Donate Online!



## Payment Information

Name on Card \_\_\_\_\_

Card # \_\_\_\_\_

Amount \$ \_\_\_\_\_ CC Type (i.e. Visa) \_\_\_\_\_

Exp \_\_\_\_\_ CSV Code \_\_\_\_\_

Signature \_\_\_\_\_

## Check

Make check payable to:  
TMPF  
50 Cowan Drive  
Reno, NV 89509

## Cash

Cash Amount  
\$ \_\_\_\_\_





**Main Office:**

50 Cowan Dr.  
Reno, NV 89509  
775.410.1702

**Nature Study Area Office:**

6800 Pembroke Dr.  
Reno, NV 89502  
775.360.6068

---

**[www.tmparksfoundation.org](http://www.tmparksfoundation.org)**

