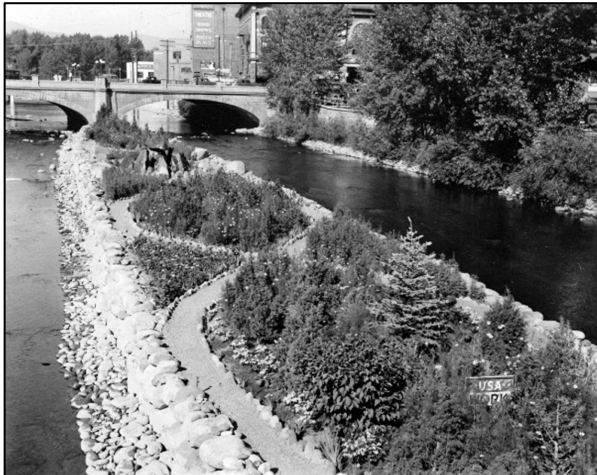


Truckee Meadows Parks Rephotography Project Handbook



Table of Contents

Welcome	3
Supply List	4
Contemporary Site Stewardship	4
Historical Site Stewardship	5
Tips for Taking Photos	6
Submitting Your Photos	6
Links	6
Examples	7
Site Data Sheets	9



Truckee River Island Park
Top: UNR Library Special Collection, 1937
Bottom: Ernie Ross, 2013



Whitaker Park Tennis Courts
Top: UNR Library Special Collection, 1937
Bottom: Ernie Ross, 2013



Welcome to the Truckee Meadows Parks Rephotography Project!

On behalf of the Board of Directors and our members, I would like to thank you for volunteering your time to make this community project a success. As part of the *Healthy Parks, Healthy People: Truckee Meadows* initiative, the Rephotography Project was created to develop a photographic archive that documents the ever-changing state of our parks. Not only will this help to create a qualitative measure of the condition of our parks, it should be interesting to watch these valuable public assets change over time. We also hope it provides you with a fun new way to enjoy the parks you love.

You'll find everything you need to get started in this short handbook. If you would like help setting up your site, please don't hesitate to call. A volunteer lead or I will be happy to meet you at your chosen site and get you started.

We hope you enjoy your role as a park site steward for years to come.

We'll see you in the parks!

Nathan Daniel
Executive Director
Truckee Meadows Parks Foundation
775-453-0693



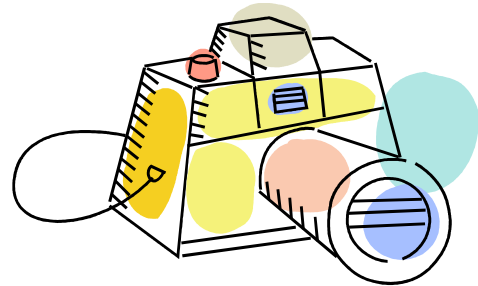
About the Rephotography Project

The Truckee Meadows Parks Foundation Rephotography Project aims to increase sense of place in Reno/Sparks community by creating a photographic record of change in our parks over the years. This record will be freely open and accessible to the public in perpetuity at the Park Foundation's website. Volunteer site stewards select a park and photograph a particular scene or feature in that park. They revisit the park four times a year, recreating the exact same photo each time they visit. These photos are then sent to the Parks Foundation where they are catalogued and uploaded to the Parks Rephotography Archive. The collection of photos, and the changes they document, can then be viewed and enjoyed by everyone.

Supply List

Essential Field Items

- Site Steward Data Sheet
- Copy of previous contemporary or historical photo
- GPS (to establish a new site)
- Compass (to establish a new site)
- Camera, 35mm or digital



Recommended Items

- Camera tripod that can achieve 4.5' height
- Measuring tape
- Clipboard

Contemporary Site Stewardship

Setting up a first time site

These guidelines set a standard, however if you need to adjust these methods based on your site or equipment, please feel free to make modifications and note them on your data sheet. Have fun!

1. At the designated park, pick your site subject with the following in mind:
 - Where will change be adequately observable?
 - Will the site subject be easily accessible in the foreseeable future?
 - When will the light be best to photograph the feature/landscape you've chosen?
2. If you have a tripod, place it at a location that will be easy to locate in three months. **DO NOT** place stakes in the ground or in any way mark your site. Set up your site someplace easy to remember, like next to a tree or at the corner of a two sidewalks. Note your location on your data sheet.
3. Take GPS coordinates of your chosen site and record on the datasheet.
4. Point your camera to capture the desired landscape and/or features. Keep the camera as level as possible, avoid pointing the camera up or down and instead adjust your height.
5. Use the tape measure to measure the height from ground to camera and record on the datasheet. To ensure consistency in the rephotography record, its recommended that the height of the camera be 4.5'(137cm) off the ground.
6. Take a compass bearing, aligning the compass with the direction of the camera and record on the datasheet.
7. Capture the desired photo. Re-capture if necessary.
8. Record the time of day and date on your data sheet.
9. Number your first site #1, second site #2, etc. You may be asked to change these if someone has already established sites in the same park.

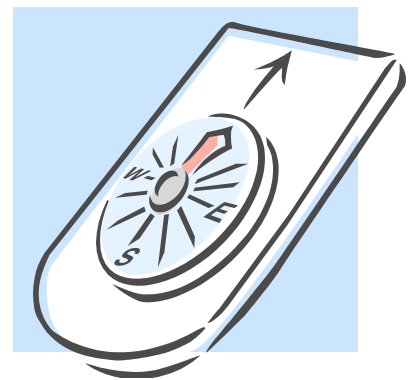
10. Complete the data sheet entering weather, camera specifications, ground conditions, vegetation and special features in the photo, camera settings, and any other site specifics. Do your best. If you don't record some of these data, it's OK.

Capturing a secondary photo

1. Plan your rephotographing to correspond with the position of the sun, not with the time of day. Keep in mind that at a given time of day, the sun will be in a different place based on the season. For instance, the sun position and amount of light available at 8:00 am will be quite different in July and December. The following is a quick reference chart for sunrise and sunset times throughout the year:

	April 15	July 15	Oct 15	Jan 15
Sunrise	6:22 AM	5:44 AM	7:09 AM	7:18 AM
Sunset	7:37 PM	8:26 PM	6:20 PM	5:00 PM

2. Your site/sites should be visited seasonally, four times per year.
3. Using the data sheet from the initial photograph, locate your site with the provided GPS coordinates and any additional notes provided.
4. Place your tripod at your precise photo site and using a compass, point your camera along the provided bearing. Keep the camera as level as possible, avoid pointing the camera up or down and instead adjust the height of the tripod.
5. Use the tape measure to measure the height from ground to camera and adjust the height so it corresponds with the initial datasheet.
6. Adjust your camera to correspond with the initial camera settings including aperture, shutter speed, and zoom (The most important point here is that your zoom is set the same. Aperture and shutter speed are less important).
7. Use the copy of the initial photo to ensure that alignment, zoom, and desired photo features are proportional to the initial photo.
8. Capture the desired photo.
9. Re-check the initial photo with the one you just took, and adjust accordingly if another photograph is needed.
10. Complete the data sheet.



Historical Site Stewardship

Setting up a first time site

Historical and contemporary site stewardship are essentially the same, but historical stewardship starts with an old photo from a personal or public archive. With historical rephotography, someone in the past has already set up your site location for you. We encourage people to recreate photos from their personal collections.

Capturing a secondary photo

1. This requires some detective work to find the exact location where the original photograph was shot. Once you find that location, establish a new site by using your historical photo to align the camera based on angle, zoom and height.
2. Take a photo and compare it to the original historical photo.
3. Once you have taken a photo that aligns with the historical photo, record the specifics of the new site on the data sheet.
4. Once the site has been established, the contemporary photo procedure can be followed.

Tips for taking photos (initial or secondary)

1. For best lighting, take photos in the early morning, late afternoon, or on cloudy days with natural light.
2. Take photos at time of day, when the sun is on your back as you face your viewpoint.

Submitting your photos

1. When you are ready to submit your photos, you may go to the [rephotography page](#) on the Truckee Meadows Parks Foundation website and click on “Contemporary Rephotography” and then “Submit Photos.”
2. Fill out the appropriate form for each site, and then click “submit.”
3. Make sure you email the photos to info@tmparksfoundation.org with the appropriate site number.
4. or mail your photos and a copy of your data sheet (you should keep the original) to: TMPF, 50 Cowan Dr., Reno, NV 89509.
5. Your photo will then be reviewed and uploaded to the site by a website administrator. This is a volunteer-driven project, so please bear with us and give us a few weeks to get your photos uploaded.

Links

Truckee Meadows Parks Rephotography webpage:

- Download a copy of this handbook, data sheets, and explore the archives.

<http://www.tmparksfoundation.org/-!rephotography/cc11>

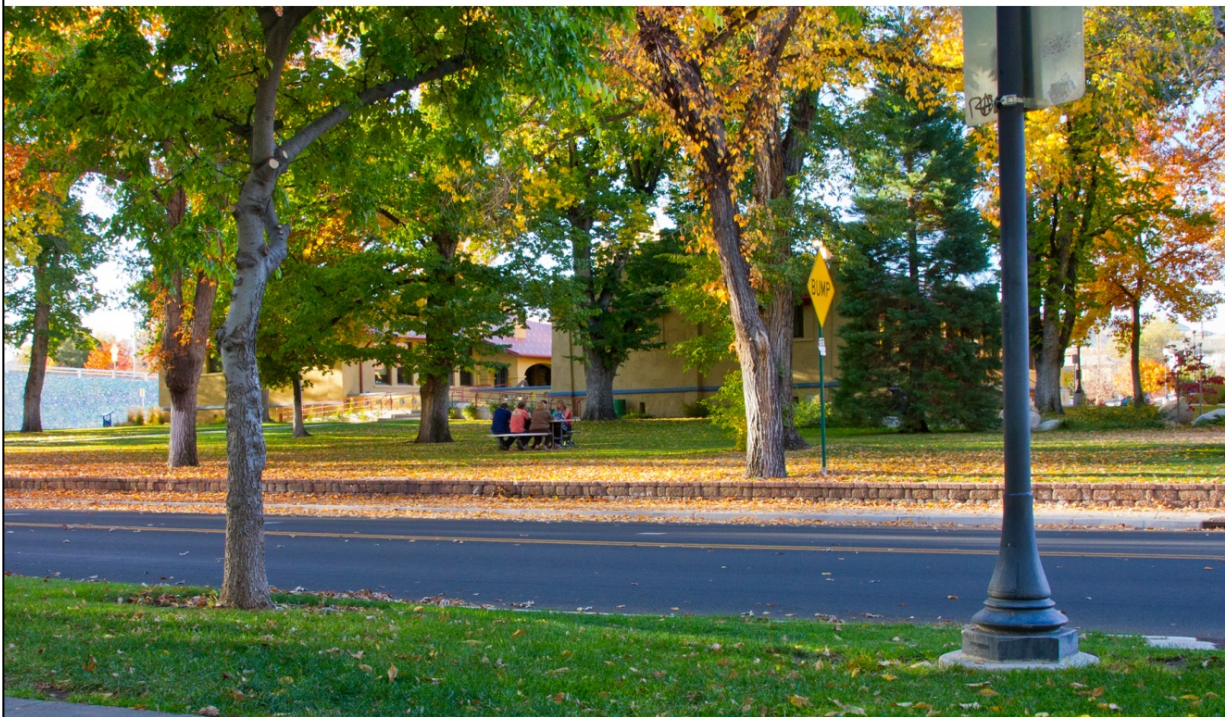
List of Truckee Meadows Parks

<http://www.tmparksfoundation.org/-!contemporary-rephotography/cn9w>

Example Photos



Idlewild Lake, Top: UNR Library Special Collection, 1960; Bottom: Ernie Ross, 2013



McKinley Park School, Top: UNR Library Special Collection, 1909; Bottom: Ernie Ross, 2013

Truckee Meadows Parks Rephotography Project Data Sheet

Park Name: _____ **Date:** _____ **Site Steward:** _____

Site #	Compass Bearing (280° for West)	Time	GPS Coordinates N 39°31.223, W 119°49.831	Camera Height	Camera Specifications (make, model, aperture, shutter speed, zoom)	Site Description (weather, ground conditions, people, vegetation or special features in the photo, other site specifics)

Draw a map of the park and label your sites.

Notes:

North ↑